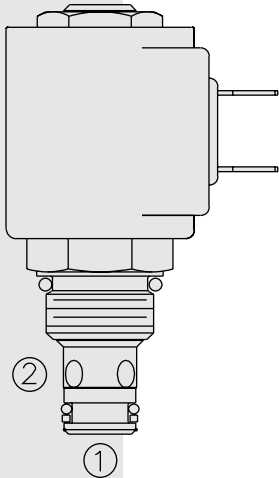


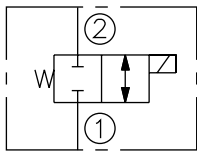
SOLENOID VALVES

SV08-24 Spool, 2-Way, Normally Closed

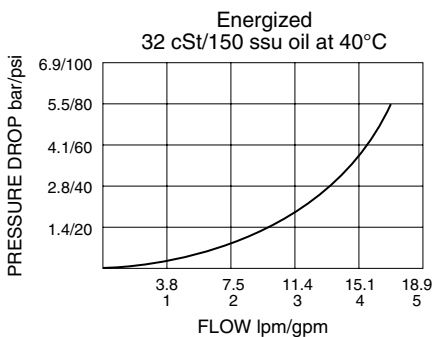


SYMBOLS

USASI/ISO:



PERFORMANCE (Cartridge Only)



DESCRIPTION

A solenoid-operated, 2-way, normally closed, direct-acting, spool-type, screw-in hydraulic cartridge valve, designed to operate as a bidirectional blocking valve in low flow circuits.

OPERATION

When de-energized, the **SV08-24** blocks flow in both directions.

When energized, the cartridge's spool shifts to open the bidirectional flow path.

Operation of Manual Override Feature: To override, push button in and twist counterclockwise 180°. The internal spring will push the button out. In this position, the valve may be only partially shifted. To assure full override shift, pull the button out to its fullest extension and hold it in this position.

To return to normal valve function, push button in, twist clockwise 180° and release. Override will be detented in this position.

FEATURES

- Continuous-duty rated solenoid.
- Hardened precision spool and cage for long life.
- Optional coil voltages and terminations.
- Both ports may be fully pressurized.
- Efficient wet-armature construction.
- Cartridges are voltage interchangeable.
- Manual override option.
- Optional waterproof E-Coils rated up to IP69K.
- Unitized, molded coil design.
- Industry common cavity.
- Compact size.

RATINGS

Operating Pressure: 207 bar (3000 psi)

Flow: 17 lpm (4.5 gpm) max.

Internal Leakage: 82 cc/minute (5 cu. in./minute) max. at 207 bar (3000 psi)

Temperature: -40 to 120°C with standard Buna seals

Coil Duty Rating: Continuous from 85% to 115% of nominal voltage

Initial Coil Current Draw at 20°C: Standard Coil: 1.2 amps at 12 VDC; 0.13 amps at 115 VAC (full wave rectified). E-Coil: 1.4 amps at 12 VDC; 0.7 amps at 24 VDC

Minimum Pull-in Voltage: 85% of nominal at 207 bar (3000 psi)

Filtration: See page 9.010.1

Fluids: Mineral-based or synthetics with lubricating properties at viscosities of 7.4 to 420 cSt (50 to 2000 ssu)

Installation: No restrictions; See page 9.020.1

Cavity: VC08-2; See page 9.108.1

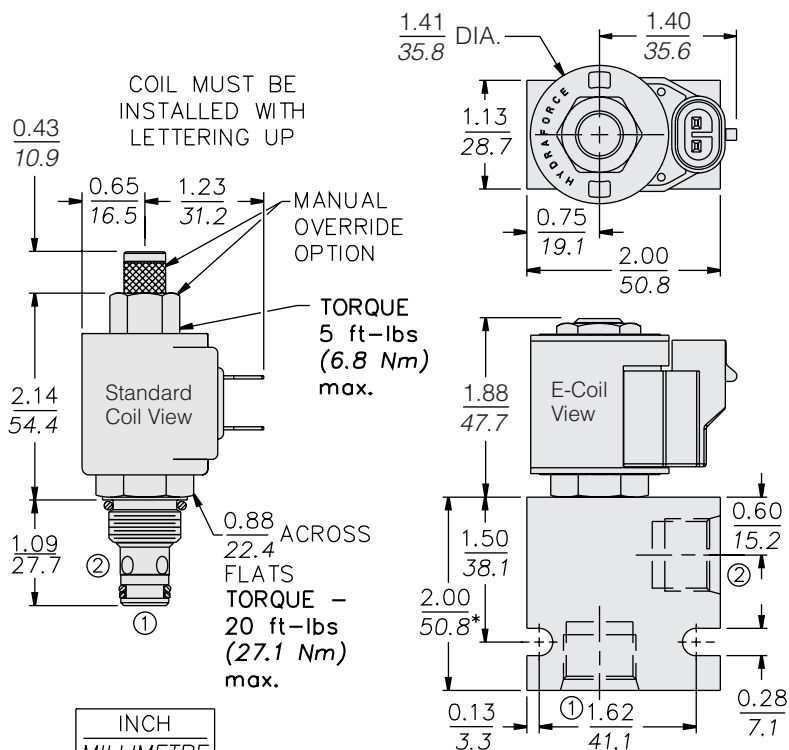
Cavity Tool: CT08-2XX; See page 8.600.1

Seal Kit: SK08-2X-M; See page 8.650.1

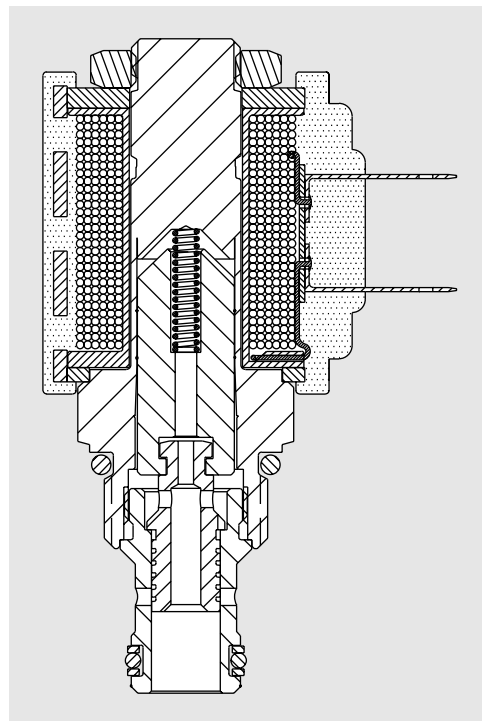
Coil Nut: Part No. 7004400;

For E-coils manufactured prior to 1-1-04, see page 3.400.1 for coil nut info.

DIMENSIONS



* BSP BODY - 55.9 mm



MATERIALS

Cartridge: Weight: 0.09 kg. (0.20 lbs.); Steel with hardened work surfaces. Zinc-plated exposed surfaces; Buna N O-rings and back-up standard.

Standard Ported Body: Weight: 0.16 kg. (0.35 lbs.); Anodized high-strength 6061 T6 aluminum alloy, rated to 240 bar (3500 psi); See page 8.008.1. Ductile iron and steel bodies available; consult factory.

Standard Coil: Weight: 0.11 kg. (0.25 lbs.); Unitized thermoplastic encapsulated, Class H high temperature magnetwire; See page 3.200.1.

E-Coil: Weight: 0.14 kg. (0.3 lbs.); Fully encapsulated with rugged external metal shell; Rated up to IP69K with integral connectors; **Note: See page 3.400.1 for all E-Coil retrofit applications.**

TO ORDER

SV08-24 - - - - -		
Option	Voltage	Termination (VDC)
None (Blank)	Std. Coil	Std. Coil
Manual Override M	0 Less Coil**	DS Dual Spades
Screen S	10 10 VDC†	DG DIN 43650
	12 12 VDC	DL Leadwires (2)
Porting	24 24 VDC	DL/W Leads w/Weatherpak® Connectors
Cartridge Only 0	36 36 VDC	DR Deutsch DT04-2P
SAE 4 4T	48 48 VDC	
SAE 6 6T	24 24 VAC	Termination (VAC)
SAE 8 8T	115 115 VAC	Std. Coil
1/4 in. BSP* 2B	230 230 VAC	AG DIN 43650
3/8 in. BSP* 3B		AP 1/2 in. Conduit
1/2 in. BSP* 4B		Termination (VDC)
*BSP Body U.K. Mfr. Only	**Includes Std. Coil Nut	E-Coil
	† DS, DW or DL terminations only	ER Deutsch DT04-2P (IP69K Rated)
Seals	E-Coil	EY Metri-Pack® 150 (IP69K Rated)
Buna N (Std.) N	10 10 VDC	
Fluorocarbon V	12 12 VDC	
	20 20 VDC	
	24 24 VDC	

Coils with internal diode are available. Consult factory.